



2021 - BAJA NEVADA CHASE BOOK PIT & CHASE MILEAGES

REVISED 5-5-21

	Pit	Race Course Pit to Pit	Race Course Total	Chase Pit to Pit
PIT 1	PAHROC SUMMIT	48.5	48.5	13.9
PIT 2	TIMPAHUTE	71.0	119.5	37.3
PIT 3	RACHEL	22.5	142.0	19.4
PIT 4	RAILROAD VALLEY	48.5	190.5	40.1
PIT 5	WARM SPRINGS	44.5	235.0	33.1
PIT 6	NV TEST SITE	32.0	267.0	39.1
FINISH	DAY 1 FINISH - TONOPAH	67.5	334.5	26.0
PIT 7	MILLERS REST STOP	30.5	365.0	15.0
PIT 8	REDLICH SUMMIT	41.0	406.0	39.7
PIT 9	BIG SMOKEY	43.5	449.5	27.5
PIT 10	MILLERS	43.0	492.5	27.2
PIT 11	TONOPAH	27.0	519.5	18.9
PIT 12	COTTONTAIL	65.0	584.5	38.5
FINISH	DAY 2 FINISH - BONNIE CLAIRE	45.5	630.0	22.8

Mileages are approximate and subject to change





2021 - BAJA NEVADA CHASE BOOK



Leaving Pit # 4 Railroad Valley to Pit # 5 Warm Springs

****REVISED 5-5-21****

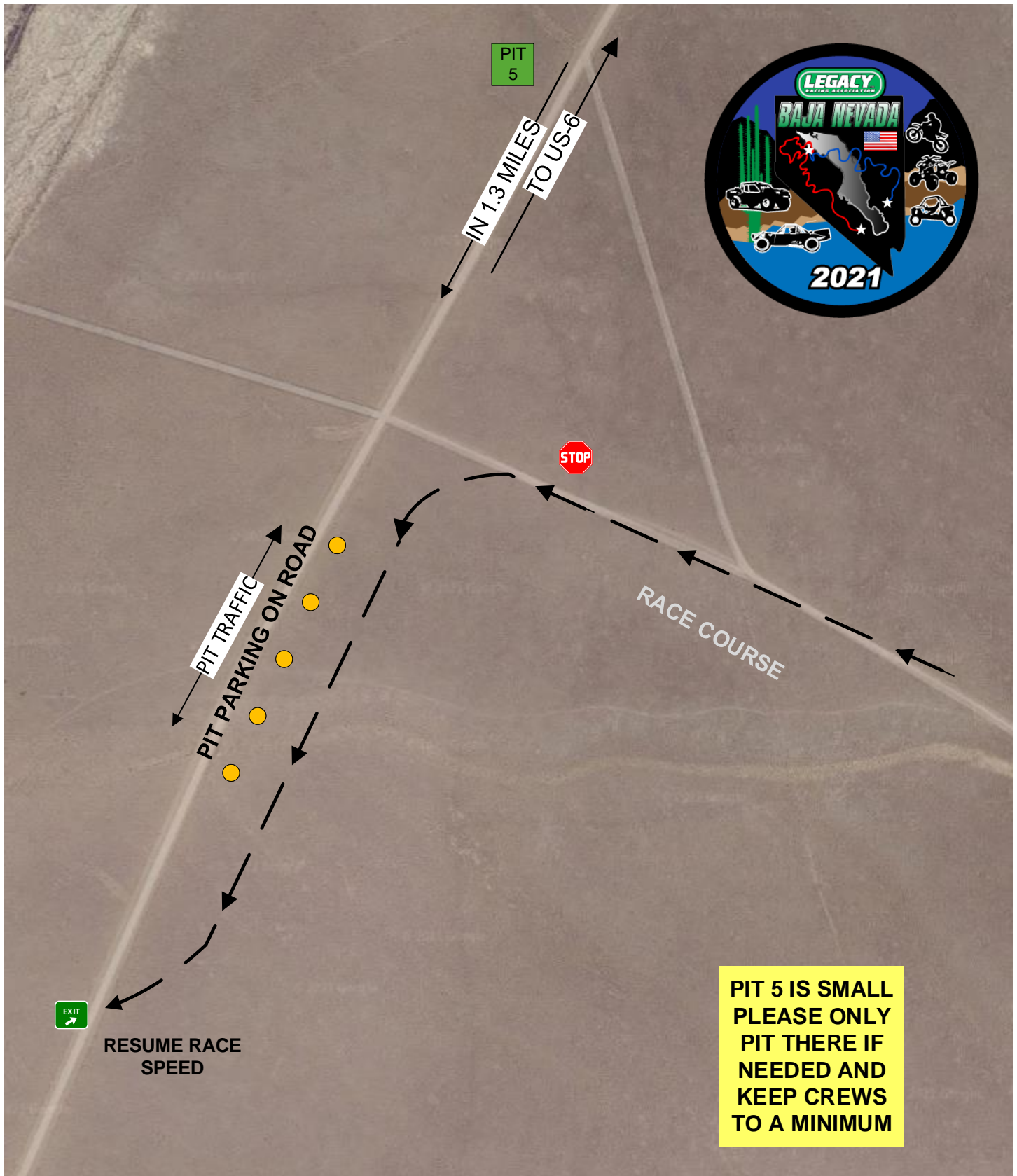
PIT # 5 - Warm Springs
N38 09.390 W116 31.450
RACE MILE 235.0
PIT #5 CLOSSES - MQ 1:45pm; CTU 6:45pm

<u>TO PIT</u>	<u>TOTAL</u>	<u>DIRECTIONS</u>	<u>ROAD</u>
0.0	110.7	Reset to "0" at highway TURN RIGHT onto NV-375 North Highway Speed Limit 70 MPH OPEN RANGE - watch for Cattle	NV-375 N
0.1	110.8	Race Course Xing - watch Flagman	NV-375 N
7.4	118.1	Green Sign Prepare to Stop	<div style="border: 1px solid black; padding: 2px;">Twin Springs Blue Springs</div> NV-375 N
18.6	129.3	Green Sign	<div style="border: 1px solid black; padding: 2px;">< Tonopah Ely ></div> NV-375 N
18.7	129.4	Stop at Stop Sign TURN LEFT onto US-6 West Highway Speed Limit 70 MPH OPEN RANGE - watch for Cattle	NV-375 N
19.0	129.7	Green sign	<div style="border: 1px solid black; padding: 2px;">Tonopah 49 Bishop 161</div> US-6 W
23.7	134.4	Green Sign	<div style="border: 1px solid black; padding: 2px;">Warm Springs Summit Elev 6293</div> US-6 W
28.5	172.3	Green Sign	<div style="border: 1px solid black; padding: 2px;">Warm Springs Summit Elev 6293</div> US-6 W
31.5	175.3	Green sign Prepare to Turn Left	<div style="border: 1px solid black; padding: 2px;">Golden Arrow Silver Bow 21</div> US-6 W
31.8	142.5	TURN LEFT onto dirt Road	US-6 W
33.1	143.8	Continue on Dirt Road for 1.3 Miles to Pit #5	DIRT ROAD

2021 – BAJA NEVADA CHASE BOOK

PIT 5 – WARM SPRINGS – RM 235.0

Updated 5-5-21





2021 - BAJA NEVADA CHASE BOOK

Leaving Pit # 5 Warm Springs to Pit # 6 Test Site

****REVISED 5-5-21****

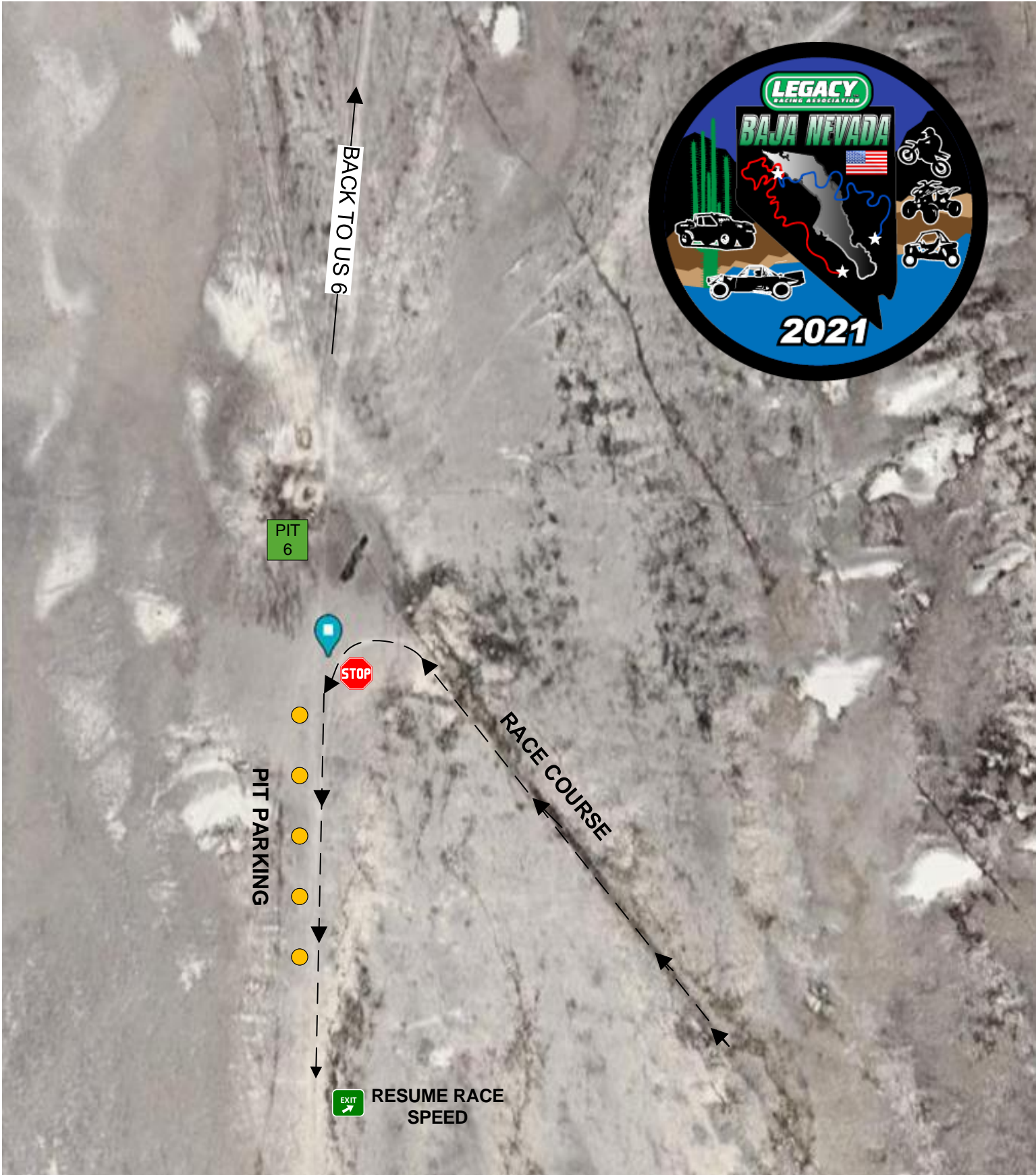
PIT # 6 - Test Site
N37 57.119 W116 49.604
RACE MILE 267.0
PIT #6 CLOSSES - MQ 3:30pm; CTU 8:30pm

<u>TO PIT</u>	<u>TOTAL</u>	<u>DIRECTIONS</u>	<u>ROAD</u>
0.0	143.8	Head 1.3 Miles back to highway Reset to "0" at highway TURN LEFT onto US-6 West Highway Speed Limit 70 MPH OPEN RANGE - watch for Cattle	DIRT ROAD
2.9	146.7	Green sign	<div>Little Fish Lake</div> <div>></div> <div>US-6 W</div>
7.3	151.1	Green sign	<div>Tonopah</div> <div>Bishop</div> <div>US-6 W</div>
9.4	153.2	Green sign	<div>Saulsbury Summit</div> <div>Elev 6522</div> <div>US-6 W</div>
13.4	157.2	Rest Area on Right	US-6 W
18.7	162.5	Green sign	<div>McKinley Tanks Summit</div> <div>Elev 6391</div> <div>US-6 W</div>
24.8	168.6	Prepare to turn Left	US-6 W
25.1	168.9	TURN LEFT onto AR 504 look for Rocket Ship Speed Limit 65 MPH OPEN RANGE - watch for Cattle	US-6 W
38.3	182.1	Continue on Paved road 13.3 Miles TURN RIGHT on to dirt road	AR 504
39.4	183.2	TURN RIGHT into Pit # 6	Dirt Road

S&S
OFF ROAD
MAGAZINE

2021 – BAJA NEVADA
CHASE BOOK

PIT 6 – TEST SITE – RM 267.0





2021 - BAJA NEVADA CHASE BOOK

Leaving Pit # 6 Test Site to Day # 1 Finish

****REVISED 5-5-21****

Day #1 Finish - Tonopah

N38 02.930 W117 12.496

RACE MILE 334.5

FINISH LINE CLOSSES - MQ 6:00pm; CTU 11:00pm



<u>TO PIT</u>	<u>TOTAL</u>	<u>DIRECTIONS</u>	<u>ROAD</u>
0.0	183.2	Reset to "0" at the Exit of the pit Turn left onto dirt road	Dirt Road
1.1	184.3	TURN LEFT onto Pavement AR 504	AR 504
13.3	196.5	TURN LEFT onto US-6 W Highway Speed Limit 70 MPH	US-6 W
19.9	203.1	Green Sign	US-6W
20.1	203.3	NV-376 JCT - Stay Straight on US-6 W	US-6W
23.9	207.1	Rodeo Grounds on right	US-6 W
25.1	208.3	Green Sign	US-6 W
25.5	208.7	TURN LEFT onto US-95 S	US-6 W
26.0	209.2	Beans & Brews Coffeehouse on left	US-95 S
26.9	210.1	Prepare to turn left	US-95 S
27.2	210.4	TURN LEFT onto paved road	US-95 S
27.4	210.6	TURN RIGHT onto dirt road - Follow Signs to Finish	DIRT ROAD

Tonopah ^
Austin >

JCT 95/6
1/2 Mile

Follow Signs to on-load area

This area is same location as Day 2 Start off-load

**Congratulations you just Finished Day 1 of
The Inaugural Baja Nevada Race**

2021 – BAJA NEVADA CHASE BOOK

DAY 1 FINISH – TONOPAH – RM 334.5

Updated 5-5-21



2021 – BAJA NEVADA CHASE BOOK



DAY 2 START LINE – TONOPAH – RM 334.5

Updated 5-5-21

